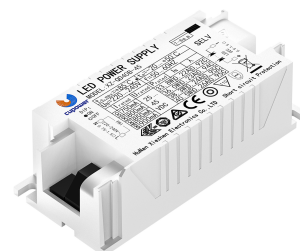


XZ-QD40B SERIES

Fixed output built-in LED driver
Output current 750mA, 800mA, 850mA, 900mA
Current setting by dip switch
Max. output power 40,5W
Nominal lifetime up to 50.000 h
For luminaries of protection class II
5-year warranty



ELECTRICAL SPECIFICATIONS	
Rated input voltage range:	220 ... 240 Vac
Max input voltage range:	198 ... 264 Vac
Rated frequency range:	50 / 60 Hz
Max input current:	0,26 A @ 230 Vac
Total harmonic distortion (max.):	/
Inrush current:	≤ 30 A at rated input voltage range @ full load
Output current tolerance:	± 5 % at rated input voltage range @ rated load
Turn on delay time:	≤ 0,5 s at full load @ rated input voltage
No load output voltage:	≤ 60 VDC
Ripple output current:	≤ 5%
Withstand voltage:	I/P-O/P: 3,75 kVac, < 5 mA 60 sec
Mains surge immunity:	L-N 1 kV
Connection terminal type:	90° push in terminal with release key
Wire cross section:	Primary side: 0,75 - 1,5mm ² ; secondary side: 0,5 - 1,5 mm ²
Wire stripping length:	7 - 8 mm
Protection rating:	IP 20
Protection:	Over voltage protection: Hiccup mode. Protection device will trigger when load voltage exceeds specified output voltage and will auto recover after the fault mode is removed.
	Short circuit protection: Hiccup mode. Protection device will trigger when short circuit and will auto recover after the fault mode is removed.

ELECTRICAL SPECIFICATIONS

Supplementary instruction:	<p>1. It is recommended that customers install under voltage protection and surge protection devices in the power supply circuit of lamps to ensure the safety of electricity consumption.</p> <p>2. The power supply is used in combination with the terminal equipment as a part of the whole lamp. Because the EMC performance is affected by LED lamps and wiring, the terminal is set in case the manufacturer needs to reconfirm the EMC of the whole device.</p>
----------------------------	---

ENVIRONMENTAL SPECIFICATIONS

Operating temperature:	-20 to 50° C
Storage temperature:	-40 to 80° C
Working humidity:	10 % to 90 %
Store humidity:	5 % to 90 %
Driver lifetime:	at tc = 75° C: 50.000 hrs.; at tc = 85° C: 30.000 hrs.; failure rate ≤ 10 %
Maximum Tc temperature:	85° C

PRODUCT SPECIFICATIONS

Model Number (Full Model)	Output Current	Input Voltage	Output Voltage	Efficiency @full load	Current Accuracy	Power Factor	Dimension L*W*H (mm)
XZ-QD40B-45-1	750mA	220-240V	25-45V	87%	± 5%	≥ 0.9	L97*W43*H30
	800mA						
	850mA						
	900mA						

SAFETY AND EMC COMPLIANCE

ENEC+ CE	EN61347-2-13:2014/A1:2017	CCC	/	SAA	AS/NZS IEC 61347.2.13.2013
	EN 61347-1:2015		/		AS/NZS 61347.1:2016
	EN 62384:2006/A1:2009		/		
	EN 55015:2013/A1:2015		/		
	EN61000-3-2:2014		/		
	EN61000-3-3:2013		/		
	EN61547:2009		/		

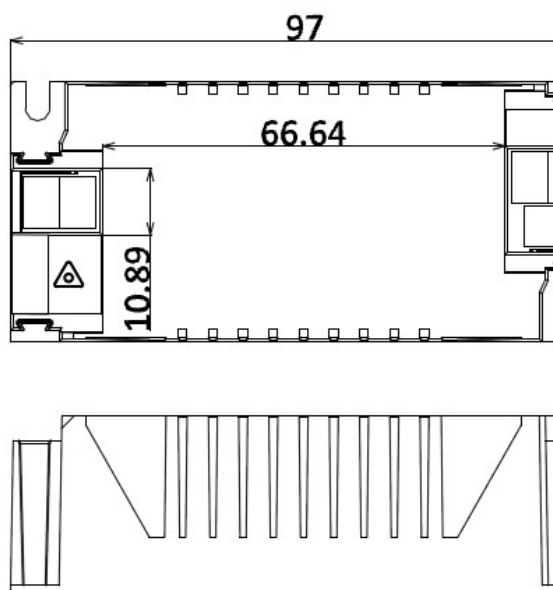
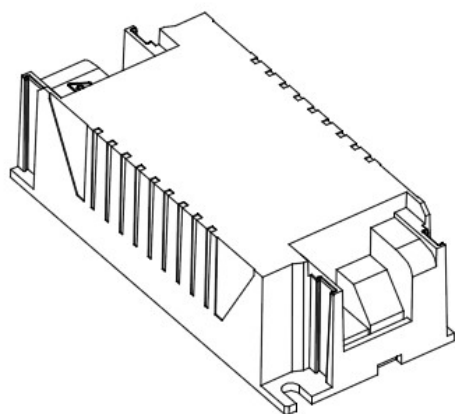
PHYSICAL DIMENSIONS

Length (L):	97 mm
Width (W):	43 mm
Height (H):	30 mm

PACKAGING

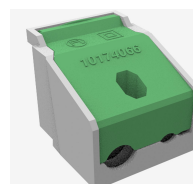
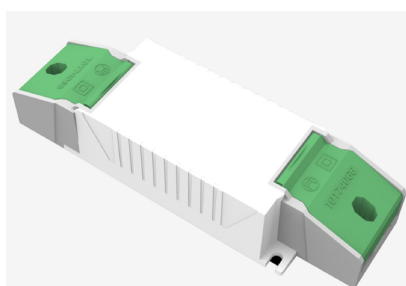
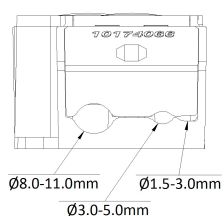
0,101 kg / unit	30 pcs / carton
Carton size:	356 x 289 x 92 mm
Carton weight:	3,5 kg

DIMENSIONS



OPTIONAL ACCESSORIES

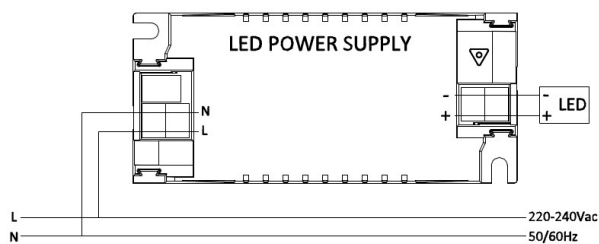
Model number:



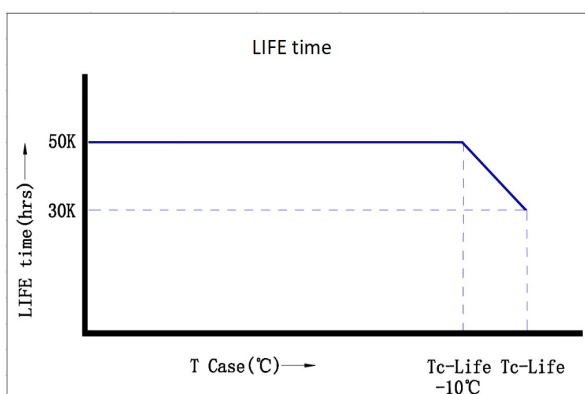
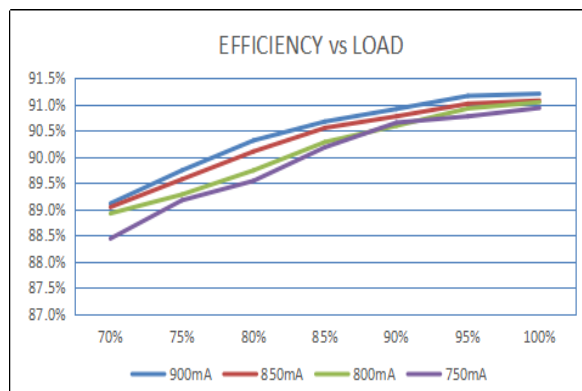
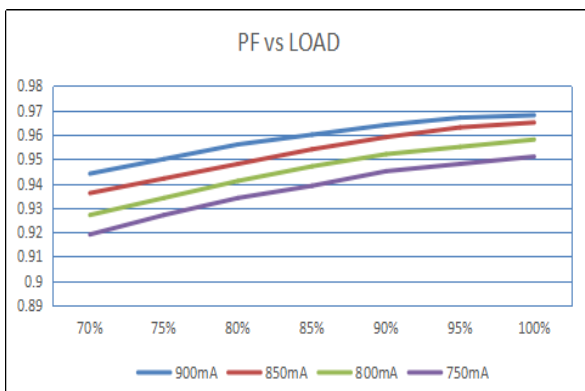
Dimensions	Length	Width	Height

WIRING DIAGRAM

1. All connections must be as short as possible to ensure good EMI performance.
2. The lamp wire should keep a certain distance from the LED power supply and other wires (5-10 cm is preferred).
3. Incorrect wiring can damage LEDs.
4. The wire must be well protected against short circuit.



TECHNICAL INFORMATION



Hunan Xiezheng Electronics Co., Ltd.

Tel: +86-735-2653770
Fax: +86-735-2653771

Add: Block A&B Building 11 Innovation Park Linyi Road, BaiLutang Town Suxian District, Chenzhou, Hunan, China.

Web: www.cupower.com

all rights reserved